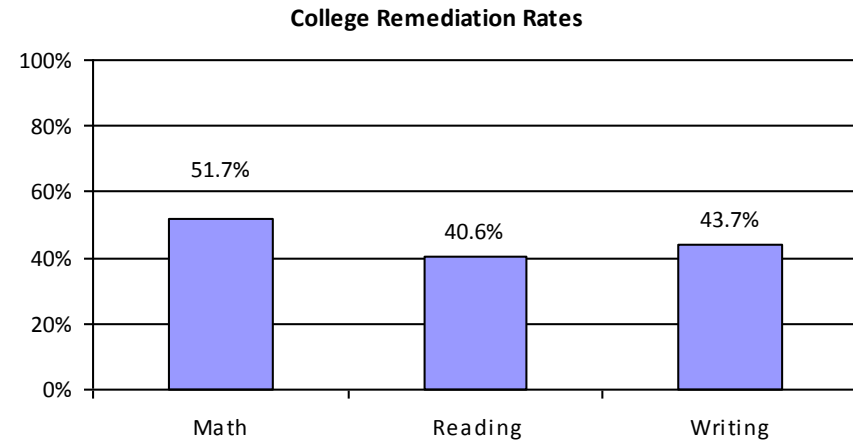
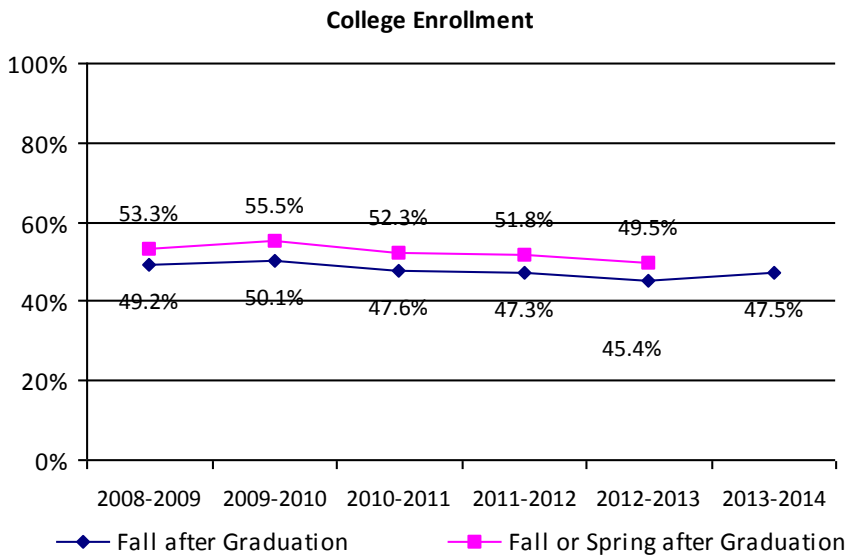
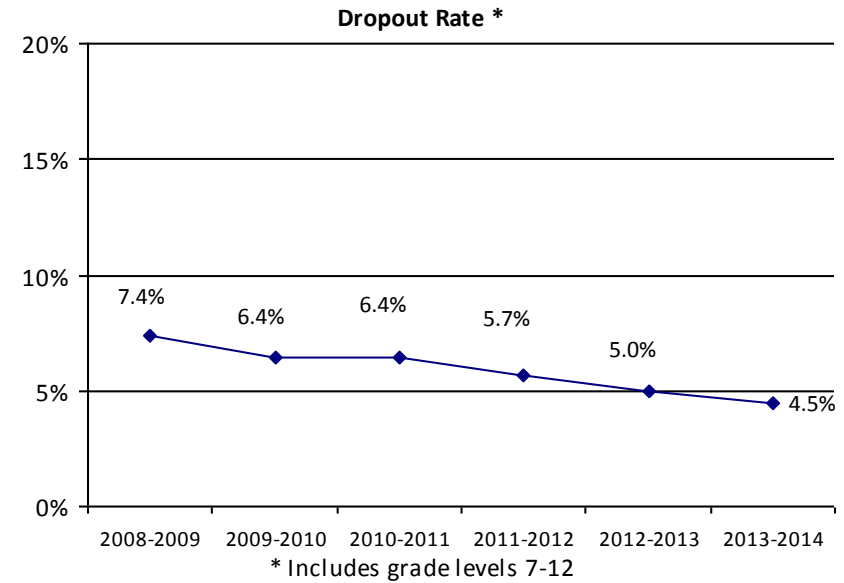
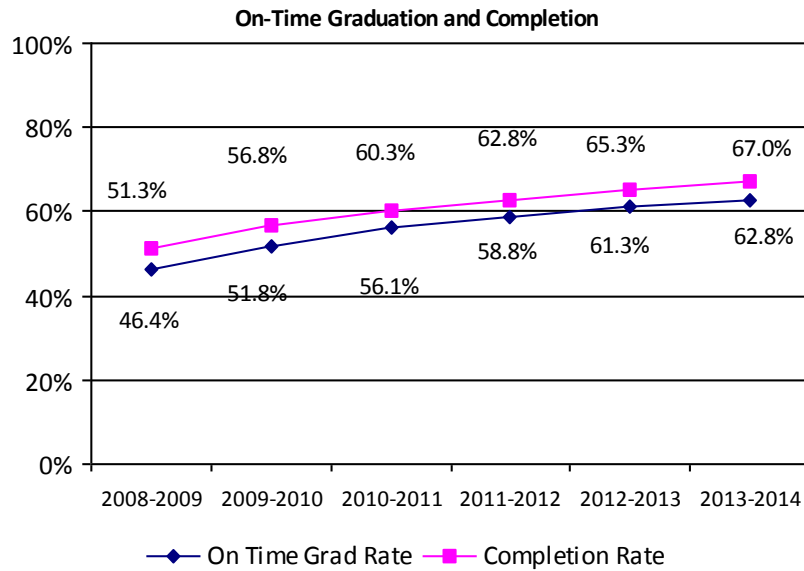


## District-Wide Historical Trend



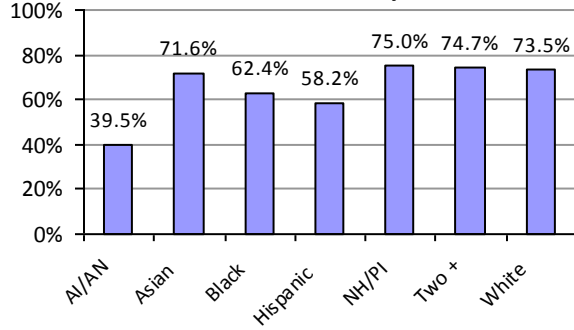
Note: Years represent the school year in which students completed high school

Note: Beginning in 2013-2014, Denver Public Schools will measure a student's college readiness separately for each content area through demonstrated competency in each area. College Remediation rates are calculated by DPS and are based on all DPS high school graduates/completers.

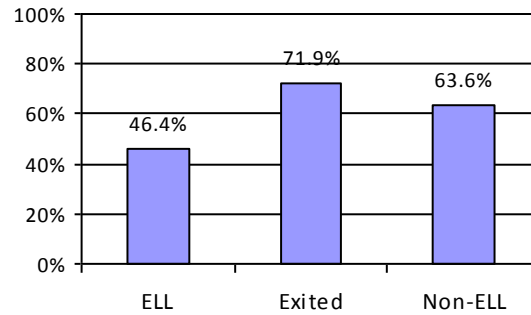
Note: 2013-2014 is the only year available using the new methodology.

## District-Wide Summary by Subgroup

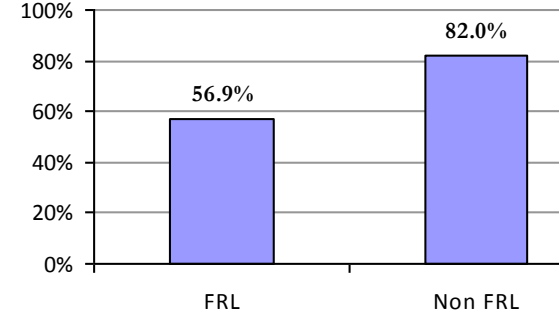
**2013-2014 On-Time Graduation by Ethnicity**



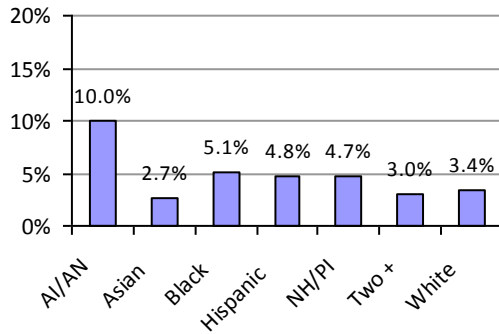
**2013-2014 On-Time Graduation by ELL Status**



**2013-2014 On-Time Graduation by FRL Status**

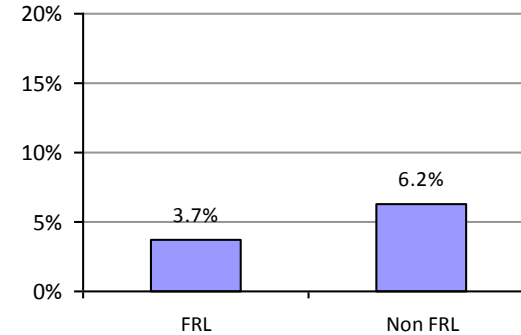


**2013-2014 Dropout by Ethnicity**

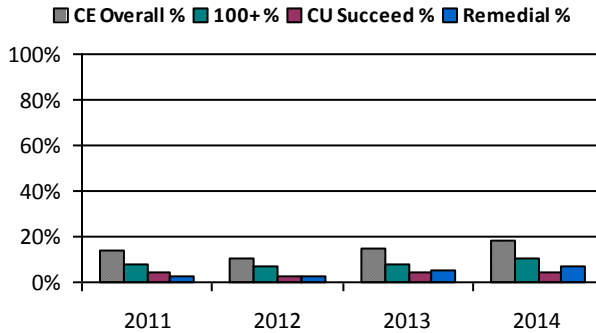


\*CDE does not publish dropout data by ELL status

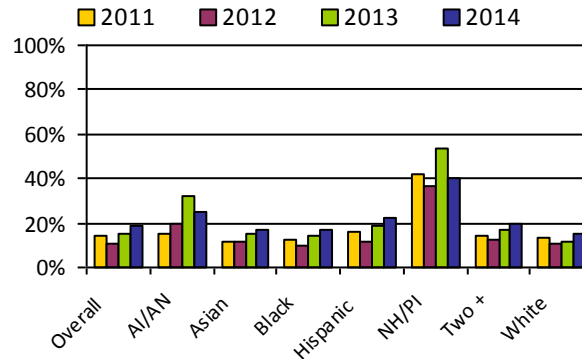
**2013-2014 Dropout by FRL Status**



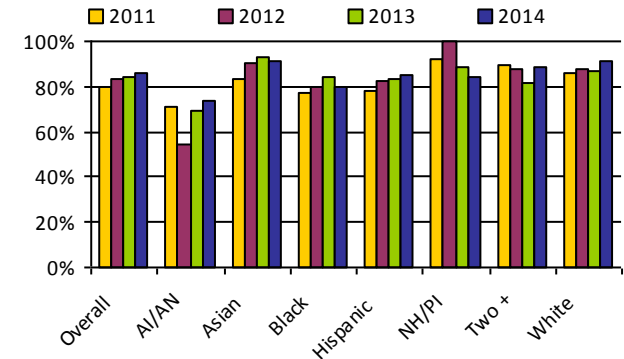
**CE Course Enrollment**

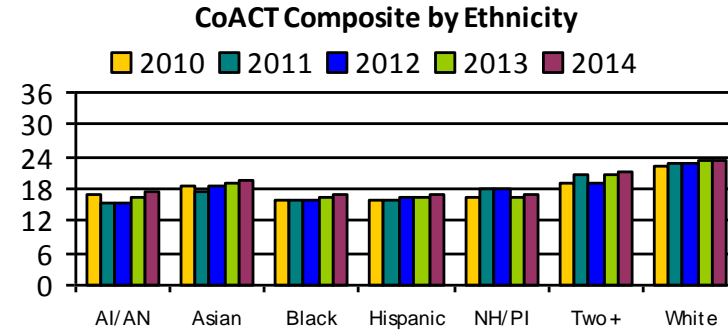
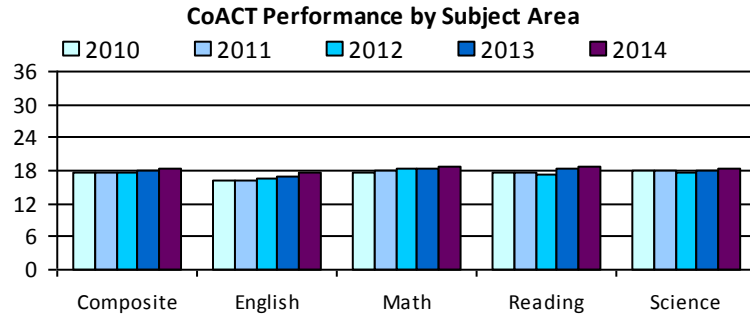


**Overall CE Course Enrollment by Ethnicity**

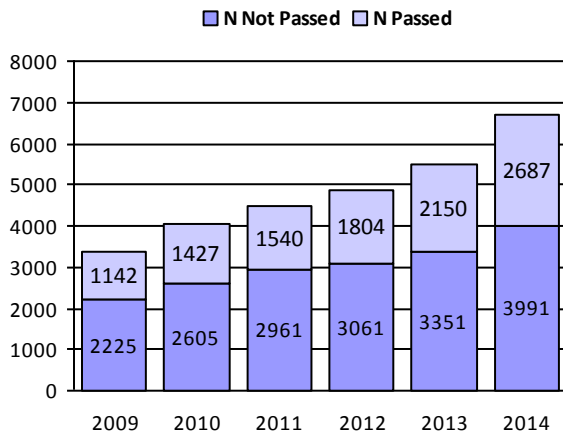


**Overall CE Course Pass Rate by Ethnicity**

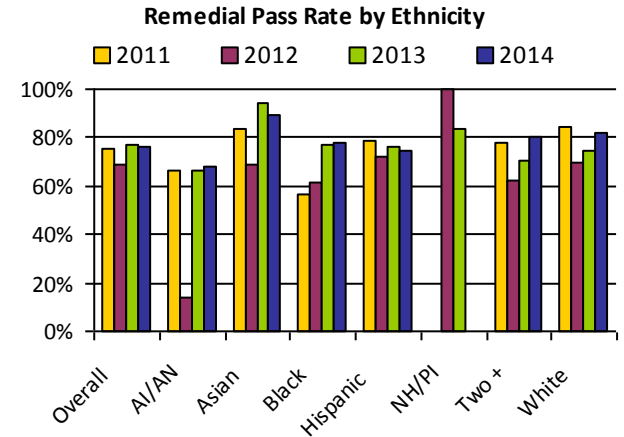




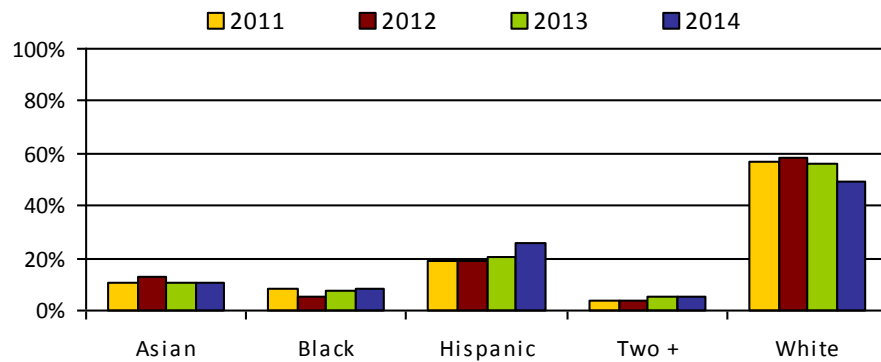
### Advanced Placement Tests



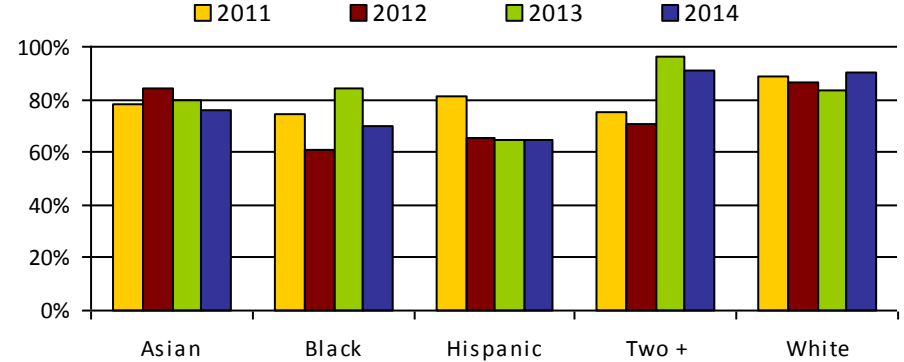
	Advanced Placement Tests					
	2012		2013		2014	
	N Tested	N Passed	N Tested	N Passed	N Tested	N Passed
AI/AN	16	0	19	3	10	5
Asian	230	64	289	95	341	111
Black	525	98	613	101	771	140
Hispanic	1655	486	1935	545	2614	793
NH/PI	9	1	6	2	7	1
Two +	191	69	208	85	285	132
White	1927	1060	2209	1303	2541	1473



### IB Enrollment Rate by Ethnicity



### IB Test Pass Rate by Ethnicity



# Post-Secondary Readiness District Report

## School Summary Table - Exit Data

	Four-Year On Time Graduation Rate										Four-Year On Time Completion Rate										Dropout Rate										
	09-10		10-11		11-12		12-13		13-14		09-10		10-11		11-12		12-13		13-14		09-10		10-11		11-12		12-13		13-14		
	N	%	N	%	N	%	N	%	N	%	N	%	N	%	N	%	N	%	N	%	N	%	N	%	N	%	N	%	N	%	N
A. Lincoln	208	51.7	299	63.5	314	66.4	281	64.7	259	75.5	210	52.2	303	64.3	316	66.8	282	65.0	259	75.5	168	5.4	140	4.3	131	4.5	115	5.1	58	2.9	
Acad. Urban Learn.+	13	31.0	12	27.3	12	30.0	9	22.0	15	38.5	14	33.3	12	27.3	16	40.0	13	31.7	20	51.3	10	5.6	26	16.3	12	6.3	5	2.7	10	5.1	
CEC HS	72	85.7	82	80.4	63	84.0	88	87.1	76	80.9	73	86.9	83	81.4	63	84.0	88	87.1	76	80.9	6	1.2	10	2.1	2	0.4	6	1.3	0	0.0	
CLA+	0	0.0	12	9.9	40	35.1	13	16.7	27	26.0	9	8.5	26	21.5	56	49.1	26	33.3	48	46.2	103	11.7	110	14.8	91	20.5	99	25.4	79	20.8	
Collegiate Prep									0	0.0							0	0.0					3	1.8	7	2.0	9	1.6			
Colorado High+	22	19.5	11	11.0	15	21.1	7	12.7	13	18.7	25	22.1	18	18.0	19	26.8	9	16.4	13	18.7	155	31.0	154	29.4	54	15.0	42	17.4	18	7.4	
Com. Challenge+	0	0.0	0	0.0	0	0.0	0	0.0	0	0.0	0	0.0	2	8.7	2	4.3	0	0.0	0	0.0	11	2.8	13	3.3	16	4.1	46	12.4	6	2.0	
Compassion Road+									4	14.3							5	17.9									43	20.7			
Crittenton HS+	2	2.6	5	5.9	6	10.9	13	22.8	20	29.9	4	5.2	10	11.8	7	12.7	18	31.6	24	35.8	70	15.2	89	20.4	66	20.2	66	29.1	50	21.9	
DC21 Wyman HS+					9	16.7	14	17.7	27	27.6					20	37.0	36	45.6	42	42.9					9	2.4	28	7.4	109	24.0	
DCIS HS	37	92.5	45	90.0	40	87.0	77	89.5	73	92.4	37	92.5	45	90.0	40	87.0	78	90.7	73	92.4	6	1.0	11	1.6	5	0.7	4	0.6	2	0.3	
DCIS Montbello H									0	0.0									0	0.0			3	1.9	9	2.0	10	1.3			
Denver Online	20	42.6	12	29.3	19	46.3	30	47.6	46	56.1	24	51.1	13	31.7	26	63.4	36	57.1	53	64.6	17	8.5	25	12.9	7	2.9	18	7.1	7	2.7	
DSA HS	120	96.8	115	97.5	127	96.9	118	97.5	145	99.3	120	96.8	116	98.3	129	98.5	119	98.3	146	100.0	5	0.6	1	0.1	4	0.4	4	0.4	1	0.1	
DSST HS	67	80.7	72	80.0	78	79.6	86	86.9	78	90.7	69	83.1	72	80.0	80	81.6	86	86.9	79	91.9	5	0.8	2	0.2	6	0.7	2	0.4	4	0.7	
East	405	80.7	454	87.6	448	89.6	495	91.5	472	90.2	412	82.1	456	88.0	453	90.6	497	91.9	473	90.4	44	1.4	48	1.6	37	1.2	44	1.6	38	1.3	
Emily Griffith+	9	3.2	8	3.1	16	5.2	7	2.2	17	5.1	72	26.0	73	28.3	68	22.1	61	19.2	86	25.7	323	23.3	277	22.1	476	35.4	486	47.7	331	37.9	
Esc Tlatelolco	4	33.3	3	25.0	8	88.9	9	69.2	8	100.0	6	50.0	4	33.3	8	88.9	10	76.9	8	100.0	7	5.5	11	7.6	1	0.8	3	3.3	1	1.0	
Excel Academy+									15	25.0							16	26.7									52	13.5			
George Wash	313	80.9	293	82.3	267	84.8	257	81.1	322	83.6	314	81.1	294	82.6	267	84.8	258	81.4	323	83.9	44	1.8	86	3.4	53	2.3	39	2.1	39	2.2	
High Tech Early									0	0.0									0	0.0			1	0.7	6	1.8	11	2.1			
Justice HS+	7	26.9	5	15.6	11	23.4	12	41.4	16	36.4	7	26.9	6	18.8	11	23.4	12	41.4	18	40.9	28	18.8	36	15.1	22	11.4	14	8.0	17	9.5	

+ Alternative School

\*N represents number of students in numerator (e.g., students who graduated on time)

# Post-Secondary Readiness District Report

## School Summary Table - Exit Data

	Four-Year On Time Graduation Rate										Four-Year On Time Completion Rate										Dropout Rate									
	09-10		10-11		11-12		12-13		13-14		09-10		10-11		11-12		12-13		13-14		09-10		10-11		11-12		12-13		13-14	
	N	%	N	%	N	%	N	%	N	%	N	%	N	%	N	%	N	%	N	%	N	%	N	%	N	%	N	%	N	%
Kennedy	207	77.0	199	77.4	223	78.5	157	74.8	190	75.8	210	78.1	200	77.8	224	78.9	161	76.7	194	77.4	23	1.2	32	1.8	24	1.4	42	2.6	20	1.2
KIPP Denver					0	0.0	61	82.4	57	81.4					1	100.0	61	82.4	58	82.9	6	4.1	6	2.0	6	1.4	4	0.9	2	0.5
Kunsmiller HS									0	0.0									0	0.0	3	1.3	0	0.0	1	0.3	3	0.7	2	0.4
Manual	0	0.0	68	68.0	65	75.6	36	62.1	44	57.1	0	0.0	68	68.0	65	75.6	36	62.1	44	57.1	9	1.6	18	3.0	7	1.3	17	3.0	33	5.5
MLK HS	69	89.6	75	91.5	75	86.2	83	83.8	121	84.0	71	92.2	77	93.9	76	87.4	84	84.8	121	84.0	12	0.8	7	0.5	10	0.8	20	1.4	18	1.4
NCAS HS									0	0.0									0	0.0					4	3.6	3	0.8	10	1.5
North	155	63.8	138	64.8	102	53.4	115	56.7	110	69.6	158	65.0	142	66.7	105	55.0	117	57.6	111	70.3	92	4.9	85	4.2	57	3.7	41	3.4	16	1.4
North Engage+									23	34.3									26	38.8									45	21.8
P.R.E.P. HS+	0	0.0	0	0.0	3	16.7	5	25.0	10	40.0	18	45.0	3	11.1	5	27.8	5	25.0	11	44.0	40	9.0	26	3.0	50	11.7	20	8.2	16	5.8
P.U.S.H. Academy+									61	61.4									61	61.4									37	13.4
Randolph HS	73	85.9	74	87.1	80	85.1	85	91.4	57	62.6	73	85.9	74	87.1	80	85.1	86	92.5	57	62.6	8	0.8	11	1.1	8	0.8	11	1.1	7	0.7
Respect Acad+									10	22.2									10	22.2									47	25.1
Ridge View+	13	5.1	9	4.6	5	2.9	7	4.3	10	7.0	95	37.3	65	33.3	49	28.8	56	34.8	61	42.7	144	8.5	140	9.8	156	19.5	82	16.4	84	17.2
Sims Fayola HS									0	0.0									0	0.0							3	3.9	3	1.5
South	215	61.8	181	58.8	229	66.6	229	78.2	205	73.7	221	63.5	186	60.4	237	68.9	231	78.8	207	74.5	61	2.6	86	3.8	68	3.5	47	2.7	41	2.5
Summit+			3	5.9	5	5.7	10	12.5	14	23.0			5	9.8	12	13.6	13	16.3	19	31.1			64	19.3	90	20.5	30	9.3	68	18.4
SW Early College	29	32.2	28	41.8	20	31.7	29	52.7	19	34.5	30	33.3	30	44.8	22	34.9	29	52.7	21	38.2	20	4.2	21	4.6	12	3.0	12	3.1	9	2.6
Thomas Jefferson	199	78.0	216	78.3	185	82.6	194	84.0	169	80.5	203	79.6	219	79.3	185	82.6	199	86.1	170	81.0	71	3.7	51	3.1	26	1.6	35	2.5	36	2.6
Venture Prep HS			0	0.0	17	68.0	38	70.4	32	71.1			0	0.0	18	72.0	38	70.4	32	71.1	2	2.0	13	2.7	17	3.4	13	4.4	5	1.6
Vista Acad HS+					9	37.5	27	69.2	37	78.7					10	41.7	27	69.2	37	78.7					15	4.8	10	3.9	7	2.5
West	119	47.6	114	53.0	117	61.9	89	45.2	70	55.9	120	48.0	117	54.4	119	63.0	92	46.7	73	58.3	132	7.8	94	6.2	106	7.5	131	17.9	14	4.3
West Career+									18	46.3									22	56.1								38	29.5	
West Gen HS									0	0.0									0	0.0						9	3.2	10	1.9	
District Totals	2634	51.8	2809	56.1	2912	58.8	2928	61.3	3120	62.8	2885	56.8	3019	60.3	3107	62.8	3119	65.3	3328	67.0	2326	6.4	2292	6.4	2013	5.7	1803	5.0	1688	4.5

+ Alternative School

\*N represents number of students in numerator (e.g., students who graduated on time)

# Post-Secondary Readiness District Report

School Summary Table - College Data

	College Enrollment Rate* Fall Immediately Following Graduation										College Enrollment Rate* Entire Year Following Graduation								2013-2014 Remediation Rate**					
	09-10		10-11		11-12		12-13		13-14		09-10		10-11		11-12		12-13		Math		Reading		Writing	
	N	%	N	%	N	%	N	%	N	%	N	%	N	%	N	%	N	%	N	%	N	%	N	%
A. Lincoln	81	26.1	108	29.3	91	24.6	108	31.9	105	38.9	92	29.7	122	33.2	102	27.6	126	37.2	154	55.4	128	46.0	129	46.4
Acad. Urban Learn.	11	37.9	8	36.4	6	22.2	7	25.0	5	17.9	13	44.8	9	40.9	7	25.9	7	25.0	24	92.3	22	84.6	23	88.5
CEC HS	40	53.3	46	55.4	50	70.4	64	65.3	56	67.5	46	61.3	51	61.4	51	71.8	67	68.4	16	18.6	15	17.4	8	9.3
CLA	0	0.0	8	25.8	20	23.3	11	15.9	8	14.5	1	100.0	9	29.0	23	26.7	13	18.8	5	12.8	29	74.4	17	43.6
Colorado High	9	29.0	9	34.6	5	14.7	3	21.4	10	33.3	12	38.7	9	34.6	6	17.6	4	28.6	26	89.7	20	69.0	25	86.2
Compassion Road									1	10.0									5	100.0	4	80.0	5	100.0
Crittenton HS	1	33.3	4	26.7	8	47.1	6	17.6	3	8.6	1	33.3	5	33.3	9	52.9	6	17.6	34	97.1	27	77.1	27	77.1
DC21 Wyman HS					4	12.9	10	19.2	10	20.0					5	16.1	14	26.9	27	77.1	30	85.7	33	94.3
DCIS HS	29	76.3	35	76.1	30	75.0	58	69.9	58	74.4	32	84.2	37	80.4	31	77.5	59	71.1	43	53.1	14	17.3	16	19.8
Denver Online	5	19.2	9	45.0	11	30.6	16	33.3	20	33.9	8	30.8	10	50.0	15	41.7	18	37.5	36	58.1	25	40.3	27	43.5
DSA HS	100	80.0	76	67.3	94	73.4	82	68.9	117	80.7	108	86.4	79	69.9	98	76.6	83	69.7	36	24.8	2	1.4	6	4.1
DSST HS	66	89.2	70	89.7	73	74.5	73	77.7	77	85.6	66	89.2	71	91.0	76	77.6	78	83.0	2	2.2	0	0.0	3	3.3
East	311	73.2	342	70.4	315	68.0	369	71.9	359	73.6	329	77.4	366	75.3	338	73.0	385	75.0	146	29.8	78	15.9	114	23.3
Emily Griffith	53	21.3	30	15.5	30	14.4	19	11.0	18	11.0	74	29.7	50	25.9	40	19.1	28	16.2	45	66.2	44	64.7	40	58.8
Esc Tlatelolco	2	50.0	3	75.0	4	33.3	3	30.0	3	27.3	2	50.0	3	75.0	4	33.3	3	30.0	11	100.0	7	63.6	9	81.8
Excel Academy									4	20.0									18	90.0	19	95.0	19	95.0
George Wash	230	67.6	205	66.1	182	66.4	151	55.3	222	67.1	249	73.2	223	71.9	195	71.2	164	60.1	98	29.3	66	19.7	75	22.4
Justice HS	2	22.2	5	31.3	3	15.0	8	28.6	2	8.0	2	22.2	6	37.5	4	20.0	8	28.6	21	84.0	19	76.0	23	92.0
Kennedy	119	50.9	100	45.2	129	53.8	95	55.9	94	45.0	138	59.0	112	50.7	136	56.7	104	61.2	121	56.5	71	33.2	85	39.7
KIPP Denver							44	72.1	45	73.8							48	78.7	30	50.0	32	53.3	28	46.7
Manual			35	50.0	31	43.7	25	55.6	21	38.2			38	54.3	35	49.3	27	60.0	38	67.9	38	67.9	38	67.9
MLK HS	48	66.7	51	61.4	52	67.5	51	61.4	70	52.2	49	68.1	54	65.1	57	74.0	57	68.7	20	14.7	52	38.2	68	50.0
North	71	41.3	59	35.5	42	36.5	45	30.0	59	46.8	79	45.9	66	39.8	46	40.0	47	31.3	64	49.6	46	35.7	32	24.8
North Engage							2	40.0	8	17.0									30	75.0	29	72.5	24	60.0

\*College enrollment rates are based on the percent of high school graduates or completers who attended college in the fall immediately following or within one year of graduating high school as reported by the National Student Clearinghouse. This includes an inclusive, but not exhaustive list of about 3,800 schools.

\*\* Note: Beginning in 2013-2014, Denver Public Schools will measure a student's college readiness separately for each content area through demonstrated competency in each area. College Remediation rates are calculated by DPS and are based on all DPS high school graduates/completers. 2013-2014 is the only year available using the new methodology.

\*\*\* N represents number of students in numerator (e.g., number of students enrolled in college the fall immediately following graduation)

# Post-Secondary Readiness District Report

School Summary Table - College Data

	College Enrollment Rate* Fall Immediately Following Graduation										College Enrollment Rate* Entire Year Following Graduation								2013-2014 Remediation Rate**					
	09-10		10-11		11-12		12-13		13-14		09-10		10-11		11-12		12-13		Math		Reading		Writing	
	N	%	N	%	N	%	N	%	N	%	N	%	N	%	N	%	N	%	N	%	N	%	N	%
P.R.E.P. HS			0	0.0	2	28.6	1	16.7	4	26.7			0	0.0	3	42.9	1	16.7	13	92.9	11	78.6	11	78.6
P.U.S.H. Academy																		84	95.5	74	84.1	81	92.0	
Randolph HS	21	28.8	15	19.7	26	30.6	33	36.3	29	46.0	26	35.6	20	26.3	34	40.0	38	41.8	49	75.4	46	70.8	46	70.8
Respect Acad							0	0.0	5	7.7									53	91.4	41	70.7	49	84.5
Ridge View	20	15.5	6	6.5	4	7.7	7	8.0	8	8.6	26	20.2	10	10.8	6	11.5	9	10.2	98	97.0	96	95.0	97	96.0
South	157	60.4	119	55.1	140	53.8	148	56.1	117	53.7	168	64.6	130	60.2	158	60.8	163	61.7	137	62.3	103	46.8	122	55.5
Summit			1	5.3	4	13.3	8	19.5	5	15.2			1	5.3	6	20.0	10	24.4	26	81.3	27	84.4	24	75.0
SW Early College	30	52.6	28	45.9	24	61.5	23	42.6	17	45.9	33	57.9	31	50.8	25	64.1	28	51.9	23	62.2	19	51.4	27	73.0
Thomas Jefferson	145	65.9	146	65.5	130	66.3	114	54.8	108	61.0	156	70.9	148	66.4	135	68.9	123	59.1	65	36.5	59	33.1	47	26.4
Venture Prep HS					13	76.5	16	39.0	20	52.6					14	82.4	19	46.3	32	84.2	25	65.8	27	71.1
Vista Acad HS					4	36.4	7	22.6	15	35.7					4	36.4	9	29.0	39	92.9	29	69.0	33	78.6
West	58	34.1	51	35.4	56	40.9	34	26.6	28	32.2	65	38.2	58	40.3	63	46.0	39	30.5	59	62.8	46	48.9	54	57.4
West Career									5	11.4									26	81.3	22	68.8	24	75.0
District Totals	1719	50.1	1670	47.6	1705	47.3	1703	45.4	1828	47.5	1905	55.5	1834	52.3	1869	51.8	1859	49.5	1936	51.7	1521	40.6	1638	43.7

\*College enrollment rates are based on the percent of high school graduates or completers who attended college in the fall immediately following or within one year of graduating high school as reported by the National Student Clearinghouse. This includes an inclusive, but not exhaustive list of about 3,800 schools.

\*\* Note: Beginning in 2013-2014, Denver Public Schools will measure a student's college readiness separately for each content area through demonstrated competency in each area. College Remediation rates are calculated by DPS and are based on all DPS high school graduates/completers. 2013-2014 is the only year available using the new methodology.

\*\*\* N represents number of students in numerator (e.g., number of students enrolled in college the fall immediately following graduation)