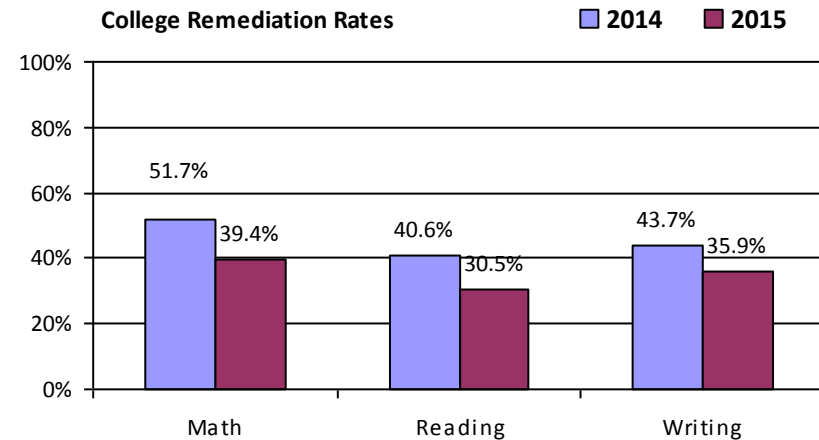
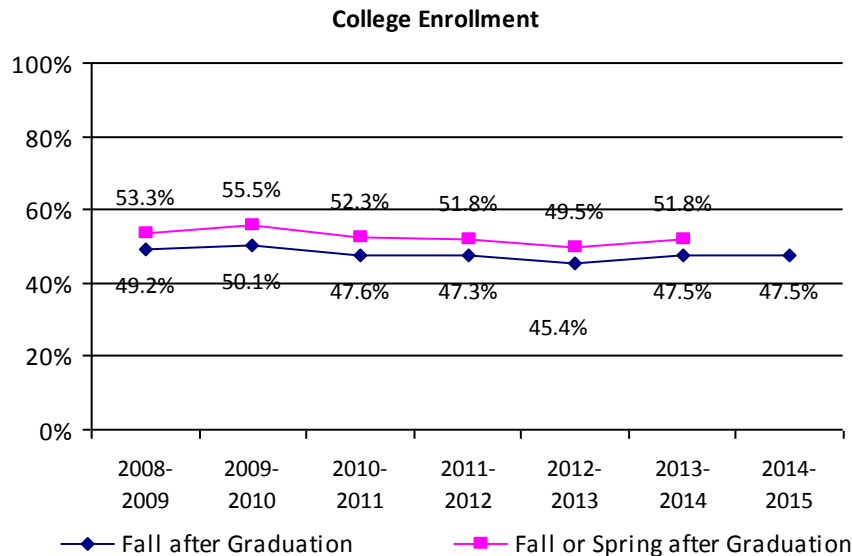
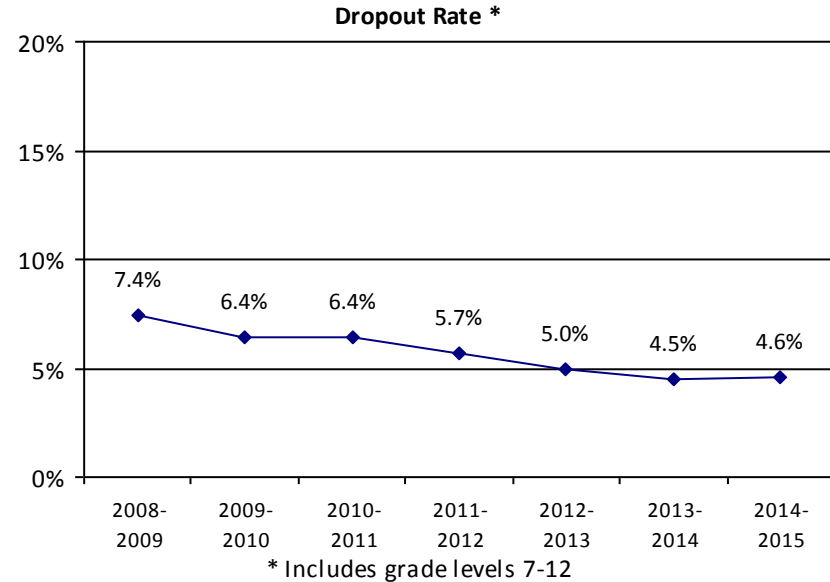
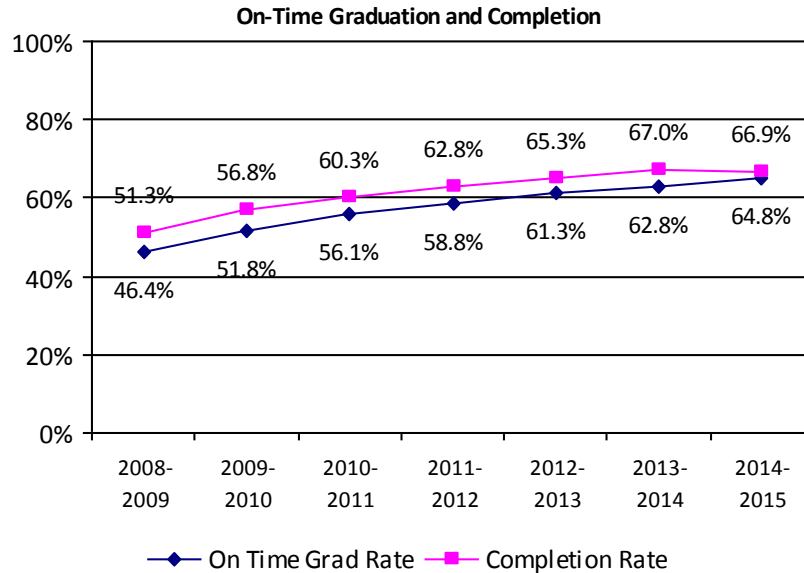


District-Wide Historical Trend



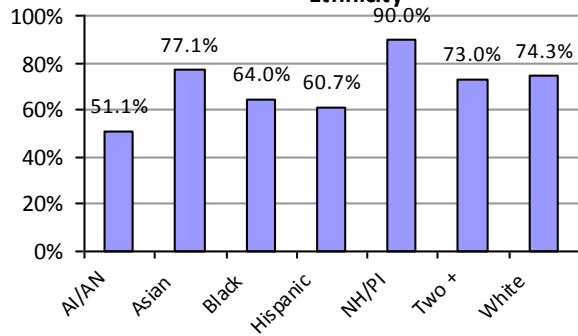
Note: Years represent the school year in which students completed high school

Note: Beginning in 2013-2014, Denver Public Schools will measure a student's college readiness separately for each content area through demonstrated competency in each area. College Remediation rates are calculated by DPS and are based on all DPS high school graduates/completers.

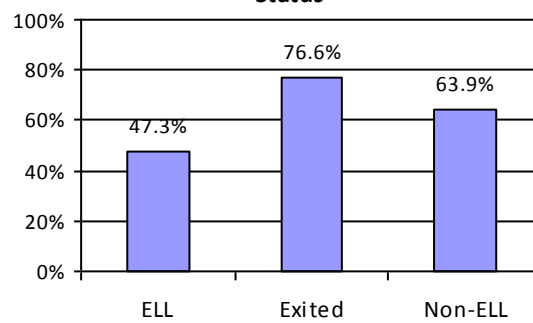
Note: 2013-2014 is the first year available using the new methodology.

District-Wide Summary by Subgroup

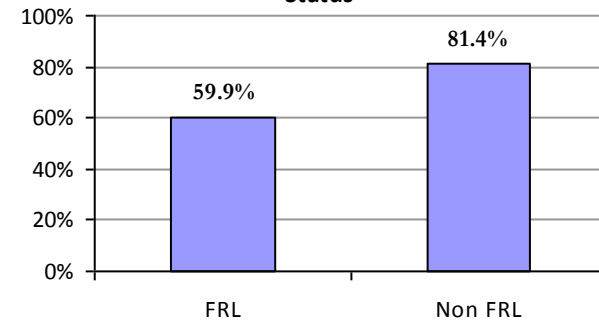
2014-2015 On-Time Graduation by Ethnicity



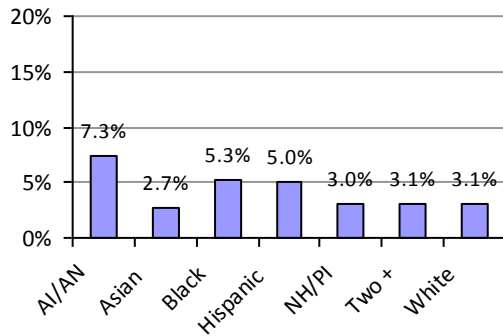
2014-2015 On-Time Graduation by ELL Status



2014-2015 On-Time Graduation by FRL Status

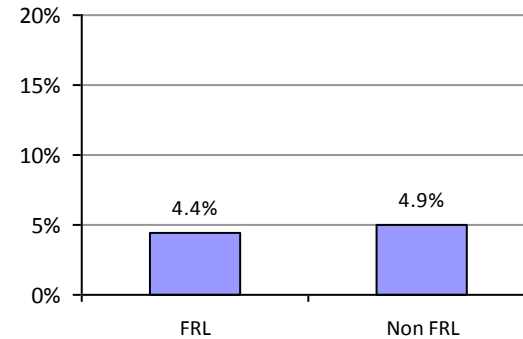


2014-2015 Dropout by Ethnicity

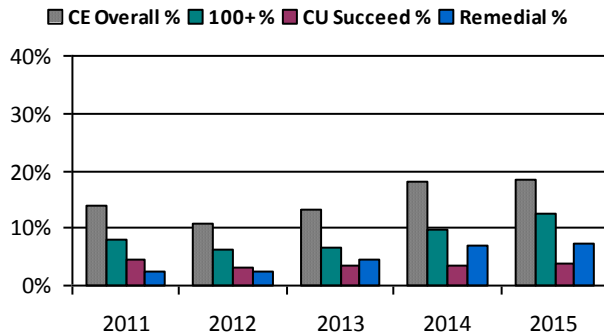


*CDE does not publish dropout data by ELL status

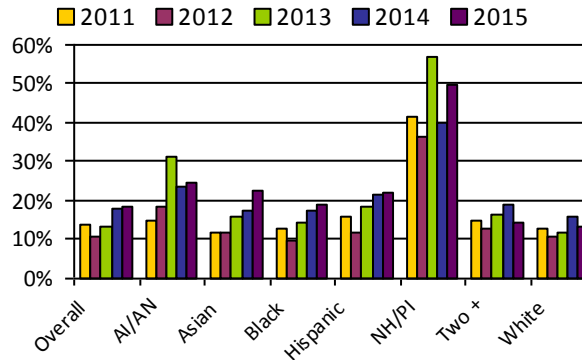
2014-2015 Dropout by FRL Status



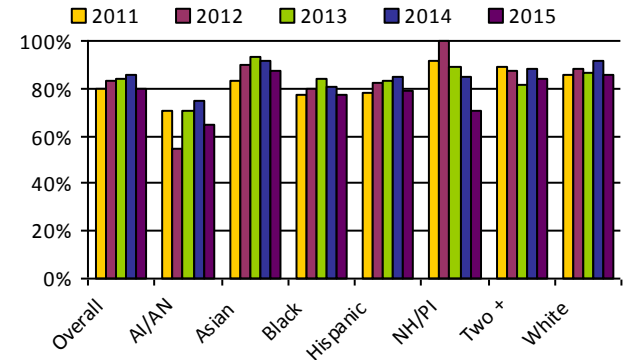
CE Course Enrollment



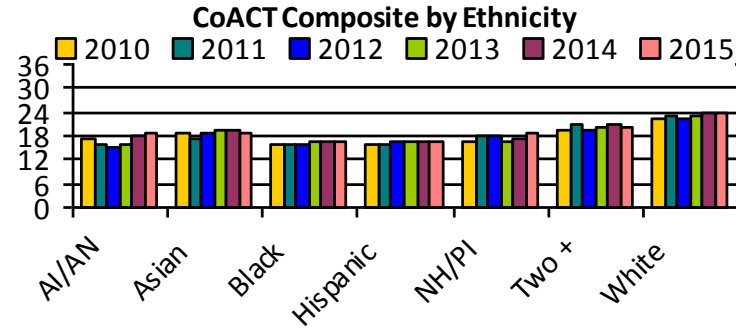
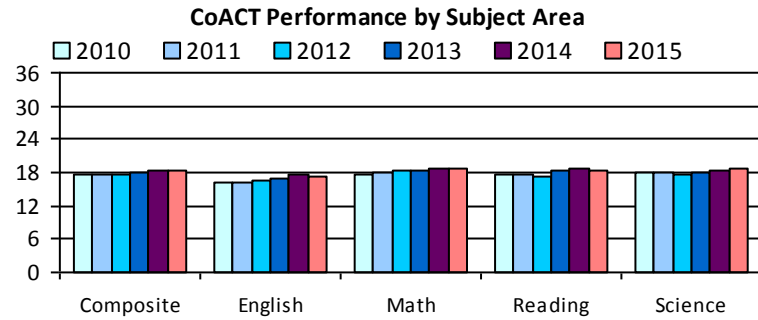
Overall CE Course Enrollment by Ethnicity



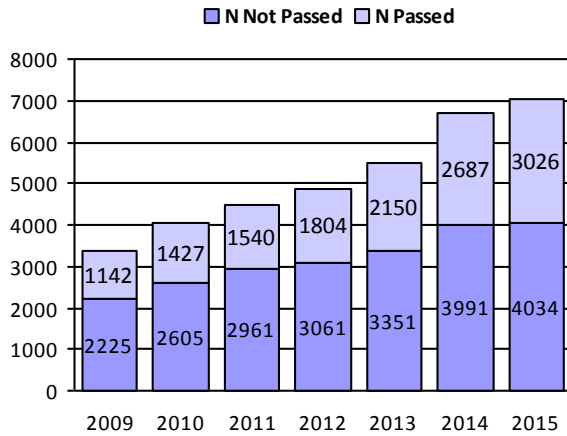
Overall CE Course Pass Rate by Ethnicity



District-Wide Summary by Subgroup

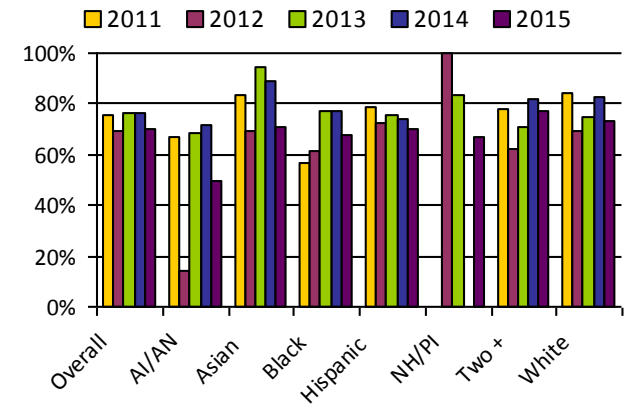


Advanced Placement Tests

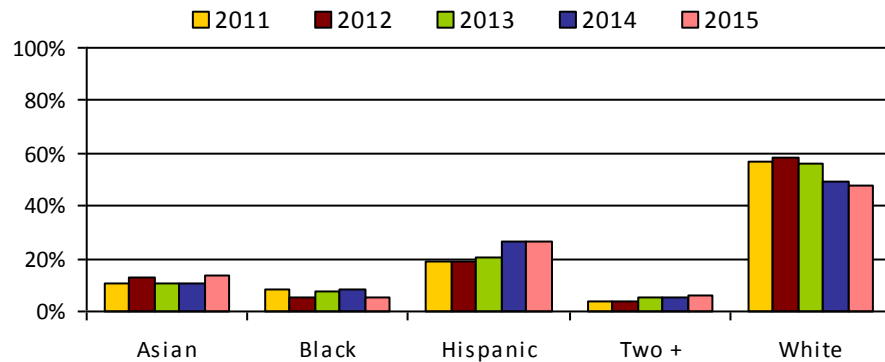


	Advanced Placement Tests					
	2013		2014		2015	
	N Tested	N Passed	N Tested	N Passed	N Tested	N Passed
AI/AN	23	5	22	11	49	17
Asian	288	95	341	111	355	137
Black	612	101	769	140	697	168
Hispanic	1919	546	2606	790	2921	938
NH/PI	5	2	7	1	12	5
Two +	206	83	286	131	323	143
White	2205	1298	2539	1471	2702	1618

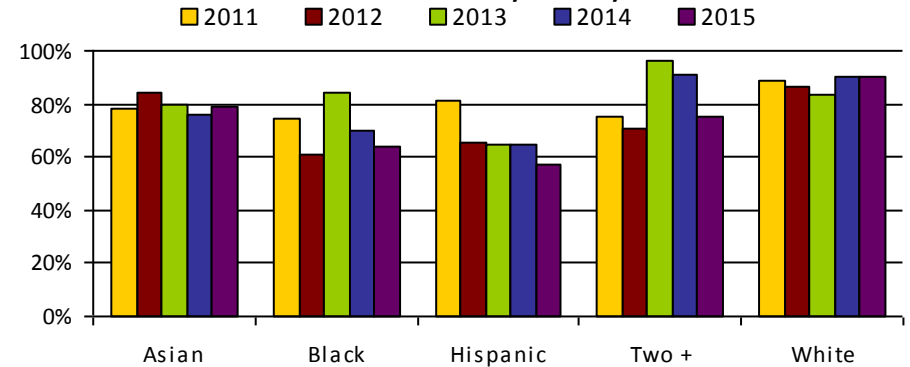
Remedial Pass Rate by Ethnicity



IB Enrollment Rate by Ethnicity



IB Test Pass Rate by Ethnicity



Post-Secondary Readiness District Report

School Summary Table - Exit Data

	Four-Year On Time Graduation Rate										Four-Year On Time Completion Rate										Dropout Rate												
	10-11		11-12		12-13		13-14		14-15		10-11		11-12		12-13		13-14		14-15		10-11		11-12		12-13		13-14		14-15				
	N	%	N	%	N	%	N	%	N	%	N	%	N	%	N	%	N	%	N	%	N	%	N	%	N	%	N	%	N	%	N	%	
Abraham Lincoln	299	63.5	314	66.4	281	64.7	259	75.5	266	77.3	303	64.3	316	66.8	282	65.0	259	75.5	272	79.1	140	4.3	131	4.5	115	5.1	58	2.9	59	3.1			
Bruce Randolph HS	74	87.1	80	85.1	85	91.4	57	62.6	64	79.0	74	87.1	80	85.1	86	92.5	57	62.6	64	79.0	11	1.1	8	0.8	11	1.1	7	0.7	13	1.4			
CEC HS	82	80.4	63	84.0	88	87.1	76	80.9	69	72.6	83	81.4	63	84.0	88	87.1	76	80.9	69	72.6	10	2.1	2	0.4	6	1.3	0	0.0	1	0.2			
CLA+	12	9.9	40	35.1	13	16.7	27	26.0	22	34.4	26	21.5	56	49.1	26	33.3	48	46.2	25	39.1	110	14.8	91	20.5	99	25.4	79	20.8	41	14.7			
Collegiate Prep							0	0.0	56	70.0					0	0.0	57	71.3			3	1.8	7	2.0	9	1.6	16	2.5					
Colorado HS+	11	11.0	15	21.1	7	12.7	13	18.7	26	28.9	18	18.0	19	26.8	9	16.4	13	18.7	29	32.2	154	29.4	54	15.0	42	17.4	18	7.4	10	3.2			
Compassion Road+							4	14.3	7	18.4					5	17.9	9	23.7							43	20.7	32	11.7					
Crittenton+	5	5.9	6	10.9	13	22.8	20	29.9	19	25.3	10	11.8	7	12.7	18	31.6	24	35.8	21	28.0	89	20.4	66	20.2	66	29.1	50	21.9	54	25.0			
DC21 Wyman HS+			9	16.7	14	17.7	27	27.6	28	42.4			20	37.0	36	45.6	42	42.9	31	47.0			9	2.4	28	7.4	109	24.0	48	12.5			
DCIS HS	45	90.0	40	87.0	77	89.5	73	92.4	79	92.9	45	90.0	40	87.0	78	90.7	73	92.4	79	92.9	11	1.6	5	0.7	4	0.6	2	0.3	10	1.4			
DCIS Montbello HS							0	0.0	78	86.7					0	0.0	78	86.7			3	1.9	9	2.0	10	1.3	7	0.8					
Denver Online	12	29.3	19	46.3	30	47.6	46	56.1	41	56.2	13	31.7	26	63.4	36	57.1	53	64.6	46	63.0	25	12.9	7	2.9	18	7.1	7	2.7	5	1.6			
DSA HS	115	97.5	127	96.9	118	97.5	145	99.3	155	98.1	116	98.3	129	98.5	119	98.3	146	100.0	155	98.1	1	0.1	4	0.4	4	0.4	1	0.1	2	0.2			
DSST:GVR HS									82	85.4									82	85.4			0	0.0	3	0.9	0	0.0	2	0.3			
DSST:Stapleton HS	72	80.0	78	79.6	86	86.9	78	90.7	86	81.9	72	80.0	80	81.6	86	86.9	79	91.9	89	84.8	2	0.2	6	0.7	2	0.4	4	0.7	4	0.7			
East	454	87.6	448	89.6	495	91.5	472	90.2	552	89.6	456	88.0	453	90.6	497	91.9	473	90.4	555	90.1	48	1.6	37	1.2	44	1.6	38	1.3	37	1.3			
Emily Griffith+	8	3.1	16	5.2	7	2.2	17	5.1	13	3.7	73	28.3	68	22.1	61	19.2	86	25.7	48	13.8	277	22.1	476	35.4	486	47.7	331	37.9	486	52.4			
Esc Tlatelolco	3	25.0	8	88.9	9	69.2	8	100.0	10	83.3	4	33.3	8	88.9	10	76.9	8	100.0	10	83.3	11	7.6	1	0.8	3	3.3	1	1.0	3	3.5			
Excel+							15	25.0	40	49.4					16	26.7	40	49.4							52	13.5	66	14.9					
George Washington	293	82.3	267	84.8	257	81.1	322	83.6	223	82.6	294	82.6	267	84.8	258	81.4	323	83.9	223	82.6	86	3.4	53	2.3	39	2.1	39	2.2	31	1.8			
High Tech HS							0	0.0	63	77.8					0	0.0	63	77.8			1	0.7	6	1.8	11	2.1	23	3.3					
John F. Kennedy	199	77.4	223	78.5	157	74.8	190	75.8	214	76.7	200	77.8	224	78.9	161	76.7	194	77.4	217	77.8	32	1.8	24	1.4	42	2.6	20	1.2	23	1.4			
Justice HS+	5	15.6	11	23.4	12	41.4	16	36.4	12	41.4	6	18.8	11	23.4	12	41.4	18	40.9	12	41.4	36	15.1	22	11.4	14	8.0	17	9.5	33	18.4			

Post-Secondary Readiness District Report

School Summary Table - Exit Data

	Four-Year On Time Graduation Rate										Four-Year On Time Completion Rate										Dropout Rate									
	10-11		11-12		12-13		13-14		14-15		10-11		11-12		12-13		13-14		14-15		10-11		11-12		12-13		13-14		14-15	
	N	%	N	%	N	%	N	%	N	%	N	%	N	%	N	%	N	%	N	%	N	%	N	%	N	%	N	%	N	%
KIPP Collegiate			0	0.0	61	82.4	57	81.4	66	83.5			1	100.0	61	82.4	58	82.9	66	83.5	6	2.0	6	1.4	4	0.9	2	0.5	1	0.2
Kunsmiller HS							0	0.0	23	92.0						0	0.0	23	92.0	0	0.0	1	0.3	3	0.7	2	0.4	4	0.7	
Manual	68	68.0	65	75.6	36	62.1	44	57.1	39	52.7	68	68.0	65	75.6	36	62.1	44	57.1	39	52.7	18	3.0	7	1.3	17	3.0	33	5.5	24	5.1
MLK HS	75	91.5	75	86.2	83	83.8	121	84.0	105	70.0	77	93.9	76	87.4	84	84.8	121	84.0	105	70.0	7	0.5	10	0.8	20	1.4	18	1.4	26	2.2
Noel Arts HS							0	0.0	36	87.8						0	0.0	37	90.2			4	3.6	3	0.8	10	1.5	9	1.1	
North	138	64.8	102	53.4	115	56.7	110	69.6	95	70.9	142	66.7	105	55.0	117	57.6	111	70.3	96	71.6	85	4.2	57	3.7	41	3.4	16	1.4	15	1.3
North Engagement+							23	34.3	29	49.2						26	38.8	30	50.8							45	21.8	37	19.8	
P.R.E.P. HS+	0	0.0	3	16.7	5	25.0	10	40.0	9	42.9	3	11.1	5	27.8	5	25.0	11	44.0	9	42.9	26	3.0	50	11.7	20	8.2	16	5.8	1	0.4
P.U.S.H. Academy+							61	61.4	55	42.6						61	61.4	59	45.7							37	13.4	58	18.5	
Respect Academy+							10	22.2	24	32.4						10	22.2	25	33.8							47	25.1	38	22.6	
Ridge View+	9	4.6	5	2.9	7	4.3	10	7.0	5	4.1	65	33.3	49	28.8	56	34.8	61	42.7	30	24.6	140	9.8	156	19.5	82	16.4	84	17.2	138	27.1
South	181	58.8	229	66.6	229	78.2	205	73.7	187	78.6	186	60.4	237	68.9	231	78.8	207	74.5	187	78.6	86	3.8	68	3.5	47	2.7	41	2.5	37	2.2
Summit+	3	5.9	5	5.7	10	12.5	14	23.0	15	26.3	5	9.8	12	13.6	13	16.3	19	31.1	17	29.8	64	19.3	90	20.5	30	9.3	68	18.4	60	19.1
SW Early College	28	41.8	20	31.7	29	52.7	19	34.5	26	44.1	30	44.8	22	34.9	29	52.7	21	38.2	26	44.1	21	4.6	12	3.0	12	3.1	9	2.6	14	4.6
Thomas Jefferson	216	78.3	185	82.6	194	84.0	169	80.5	177	83.5	219	79.3	185	82.6	199	86.1	170	81.0	179	84.4	51	3.1	26	1.6	35	2.5	36	2.6	35	2.6
Urban Learning+	12	27.3	12	30.0	9	22.0	15	38.5	6	17.1	12	27.3	16	40.0	13	31.7	20	51.3	6	17.1	26	16.3	12	6.3	5	2.7	10	5.1	42	24.4
Venture Prep HS ^	0	0.0	17	68.0	38	70.4	32	71.1	24	80.0	0	0.0	18	72.0	38	70.4	32	71.1	24	80.0	13	2.7	17	3.4	13	4.4	5	1.6	11	3.2
Vista Acad HS+			9	37.5	27	69.2	37	78.7	42	71.2			10	41.7	27	69.2	37	78.7	42	71.2			15	4.8	10	3.9	7	2.5	7	2.6
West Career+							18	46.3	21	42.9						22	56.1	22	44.9							38	29.5	22	22.0	

+ Alternative School

*N represents number of students in numerator (e.g., students who graduated on time)

Post-Secondary Readiness District Report

School Summary Table - College Data

	College Enrollment Rate* Fall Immediately Following Graduation										College Enrollment Rate* Entire Year Following Graduation								2014-2015 Remediation Rate**					
	10-11		11-12		12-13		13-14		14-15		10-11		11-12		12-13		13-14		Math		Reading		Writing	
	N	%	N	%	N	%	N	%	N	%	N	%	N	%	N	%	N	%	N	%	N	%	N	%
Abraham Lincoln	108	29.3	91	24.6	108	31.9	105	38.9	110	38.3	122	33.2	102	27.6	126	37.2	112	41.5	126	43.9	106	36.9	132	46.0
Bruce Randolph HS	15	19.7	26	30.6	33	36.3	29	46.0	35	44.3	20	26.3	34	40.0	38	41.8	41	54.7	26	28.6	24	26.4	26	28.6
CEC HS	46	55.4	50	70.4	64	65.3	56	67.5	51	60.7	51	61.4	51	71.8	67	68.4	61	72.6	7	8.2	2	2.4	2	2.4
CLA	8	25.8	20	23.3	11	15.9	8	14.5	5	17.2	9	29.0	23	26.7	13	18.8	9	16.1	18	60.0	20	66.7	15	50.0
Collegiate Prep									17	27.4									12	21.1	7	12.3	9	15.8
Colorado HS	9	34.6	5	14.7	3	21.4	10	33.3	5	11.1	9	34.6	6	17.6	4	28.6	14	46.7	43	95.6	30	66.7	36	80.0
Compassion Road							1	10.0	1	8.3							2	20.0	10	90.9	6	54.5	8	72.7
Crittenton	4	26.7	8	47.1	6	17.6	3	8.6	5	15.2	5	33.3	9	52.9	6	17.6	5	13.9	34	100.0	20	58.8	21	61.8
DC21 Wyman HS			4	12.9	10	19.2	10	20.0	5	12.2			5	16.1	14	26.9	14	28.0	20	48.8	19	46.3	20	48.8
DCIS HS	35	76.1	30	75.0	58	69.9	58	74.4	58	71.6	37	80.4	31	77.5	59	71.1	59	75.6	12	14.8	7	8.6	11	13.6
DCIS Montbello HS							1	50.0	39	48.1							1	50.0	43	51.8	31	37.3	35	42.2
Denver Online	9	45.0	11	30.6	16	33.3	20	33.9	10	17.9	10	50.0	15	41.7	18	37.5	26	41.3	43	71.7	27	45.0	32	53.3
DSA HS	76	67.3	94	73.4	82	68.9	117	80.7	113	72.0	79	69.9	98	76.6	83	69.7	119	82.1	22	14.0	9	5.7	11	7.0
DSST:GVR HS									66	80.5									2	2.4	8	9.8	6	7.3
DSST:Stapleton HS	70	89.7	73	74.5	73	77.7	77	85.6	73	80.2	71	91.0	76	77.6	78	83.0	83	91.2	0	0.0	1	1.1	7	7.6
East	342	70.4	315	68.0	369	71.9	359	73.6	395	70.3	366	75.3	338	73.0	385	75.0	383	78.3	168	29.7	75	13.3	117	20.7
Emily Griffith	30	15.5	30	14.4	19	11.0	18	11.0	12	11.2	50	25.9	40	19.1	28	16.2	28	17.1	55	76.4	43	59.7	45	62.5
Esc Tlatelolco	3	75.0	4	33.3	3	30.0	3	27.3	4	33.3	3	75.0	4	33.3	3	30.0	3	27.3	11	91.7	5	41.7	9	75.0
Excel							4	20.0	4	9.3							4	20.0	37	86.0	28	65.1	28	65.1
George Washington	205	66.1	182	66.4	151	55.3	222	67.1	154	62.3	223	71.9	195	71.2	164	60.1	238	71.5	63	25.3	43	17.3	50	20.1
High Tech HS							0	0.0	24	36.4							0	0.0	35	53.0	12	18.2	17	25.8
John F. Kennedy	100	45.2	129	53.8	95	55.9	94	45.0	118	51.5	112	50.7	136	56.7	104	61.2	106	49.8	84	35.9	54	23.1	66	28.2
Justice HS	5	31.3	3	15.0	8	28.6	2	8.0	4	17.4	6	37.5	4	20.0	8	28.6	2	7.7	24	100.0	20	83.3	22	91.7
KIPP Collegiate					44	72.1	45	73.8	56	83.6					48	78.7	47	77.0	28	42.4	21	31.8	27	40.9
Kunsmiller HS									7	30.4									10	43.5	2	8.7	3	13.0
Manual	35	50.0	31	43.7	25	55.6	21	38.2	15	29.4	38	54.3	35	49.3	27	60.0	25	45.5	15	29.4	15	29.4	20	39.2
MLK HS	51	61.4	52	67.5	51	61.4	70	52.2	55	44.0	54	65.1	57	74.0	57	68.7	77	56.6	48	38.1	33	26.2	41	32.5

Post-Secondary Readiness District Report

School Summary Table - College Data

	College Enrollment Rate* Fall Immediately Following Graduation										College Enrollment Rate* Entire Year Following Graduation								2014-2015 Remediation Rate**					
	10-11		11-12		12-13		13-14		14-15		10-11		11-12		12-13		13-14		Math		Reading		Writing	
	N	%	N	%	N	%	N	%	N	%	N	%	N	%	N	%	N	%	N	%	N	%	N	%
Noel Arts HS									12	29.3									31	75.6	29	70.7	31	75.6
North	59	35.5	42	36.5	45	30.0	59	46.8	40	29.6	66	39.8	46	40.0	47	31.3	65	50.8	42	31.3	41	30.6	42	31.3
North Engagement					2	40.0	8	17.0	7	14.9					2	40.0	11	23.4	27	67.5	25	62.5	30	75.0
P.R.E.P. HS	0	0.0	2	28.6	1	16.7	4	26.7	3	23.1	0	0.0	3	42.9	1	16.7	5	31.3	4	36.4	8	72.7	9	81.8
P.U.S.H. Academy									14	20.6									56	87.5	51	79.7	56	87.5
Respect Academy					0	0.0	5	7.7	5	6.9					0	0.0	5	7.7	66	93.0	59	83.1	61	85.9
Ridge View	6	6.5	4	7.7	7	8.0	8	8.6	5	11.1	10	10.8	6	11.5	9	10.2	13	13.7	42	97.7	38	88.4	42	97.7
South	119	55.1	140	53.8	148	56.1	117	53.7	111	56.1	130	60.2	158	60.8	163	61.7	126	57.8	34	17.2	45	22.7	55	27.8
Summit	1	5.3	4	13.3	8	19.5	5	15.2	7	17.9	1	5.3	6	20.0	10	24.4	11	33.3	20	64.5	20	64.5	20	64.5
SW Early College	28	45.9	24	61.5	23	42.6	17	45.9	19	39.6	31	50.8	25	64.1	28	51.9	21	55.3	18	36.7	29	59.2	36	73.5
Thomas Jefferson	146	65.5	130	66.3	114	54.8	108	61.0	106	57.3	148	66.4	135	68.9	123	59.1	115	64.6	74	39.6	40	21.4	48	25.7
Urban Learning	8	36.4	6	22.2	7	25.0	5	17.9	1	6.7	9	40.9	7	25.9	7	25.0	5	17.9	10	100.0	9	90.0	9	90.0
Venture Prep HS			13	76.5	16	39.0	20	52.6	11	37.9			14	82.4	19	46.3	21	55.3	19	65.5	15	51.7	17	58.6
Vista Acad HS			4	36.4	7	22.6	15	35.7	21	50.0			4	36.4	9	29.0	18	42.9	30	71.4	22	52.4	25	59.5
West Career							5	11.4	6	17.6							7	15.9	30	88.2	23	67.6	27	79.4

*College enrollment rates are based on the percent of high school graduates or completers who attended college in the fall immediately following or within one year of graduating high school as reported by the National Student Clearinghouse. This includes an inclusive, but not exhaustive list of about 3,800 schools.

** Note: Beginning in 2013-2014, Denver Public Schools will measure a student's college readiness separately for each content area through demonstrated competency in each area. College Remediation rates are calculated by DPS and are based on all DPS high school graduates/completers.

*** N represents number of students in numerator (e.g., number of students enrolled in college the fall immediately following graduation)